

# Strengthening the Nation's Public Health Infrastructure and Workforce: A National Perspective

---

---

## NHMA Hispanic Health Professional Leadership Network Organizational Training Calls

José T. Montero, MD, MHCDS

Director, Office of Recipients Support and Coordination

National Center for State, Tribal, Local, and Territorial Public Health Infrastructure and Workforce

# Content

- Overview of the Public Health Infrastructure Center
- Partnerships to Advance Public Health
- Public Health Workforce
- Folic Acid

# CDC Moving Forward

## CDC Moving Forward Core Areas of Improvement

- Share Scientific Findings and Data Faster
- Translate Science into Practical, Easy to Understand Policy
- Prioritize Public Health Communications
- Develop a Diverse Workforce Prepared for Future Emergencies – CDC and Nationwide
- Promote Results-based Partnerships
- Enhance Laboratory Science and Quality
- Integrate Health Equity
- Modernize Data



1

# Overview of the Public Health Infrastructure Center

# CDC Moving Forward

**Public Health Infrastructure Center** is one of the center pieces of CDC Moving Forward. The new center:

- **Creates** a hub of information, support, resources, and engagement for with local health departments and public health partners
- **Focuses** on the big picture of public health and work to strengthen every part of the nation's vast and complex public health network

# Public Health Infrastructure Center Overview



## Mission

To improve public health outcomes by strengthening the public health infrastructure and workforce of the United States.

Public Health Infrastructure is made up of the **people, services, and systems** needed to promote and protect health in every U.S. community.

# Primary Functions

Jurisdictional  
Support



Division of  
Jurisdictional  
Support

Partnerships &  
Technical  
Assistance



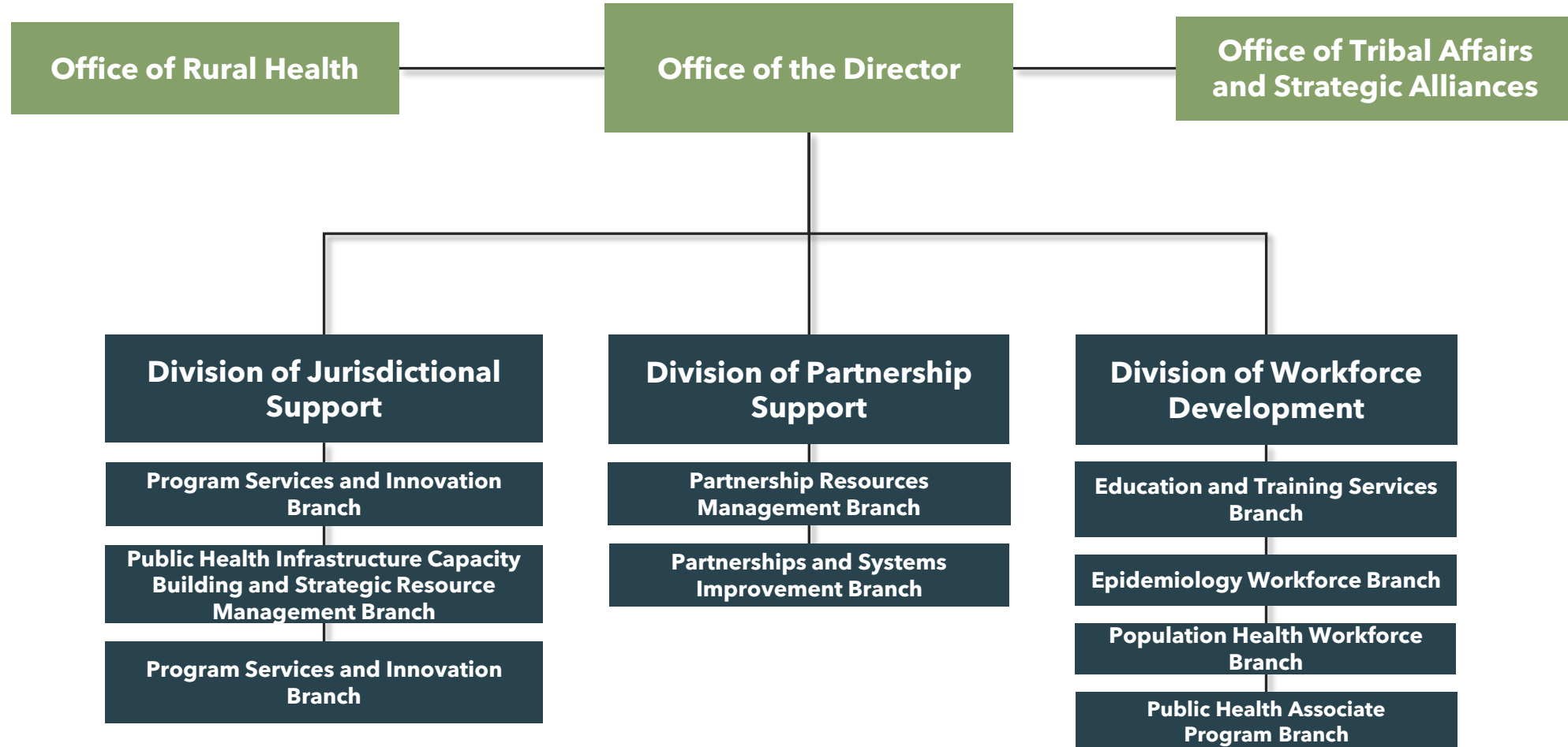
Division of  
Partnership  
Support

Workforce  
Development



Division of  
Workforce  
Development

# Organizational Structure





# The Center's Approach



## Customer Service

Advances new ways of serving jurisdictions and tribes to reduce administrative burden, strengthen peer-to-peer technical assistance, advance diversity, equity, inclusion, and accessibility, and further our shared public health goals.



## Evaluation and Performance Management

Evaluates and assesses the center's services and programs to identify best practices, build evidence base and continually improve programs and services.



## Partnerships

Promotes results-based partnerships by leveraging partners to support jurisdictions, improving service to funded partners, and reducing barriers to partnering with CDC.



## Collaboration across the Agency

Serves as a champion for enterprise solutions through collaboration across CDC programs to advance a cohesive, efficient approach to supporting jurisdictions, tribes, and partners.

2

# Partnerships to Advance Public Health

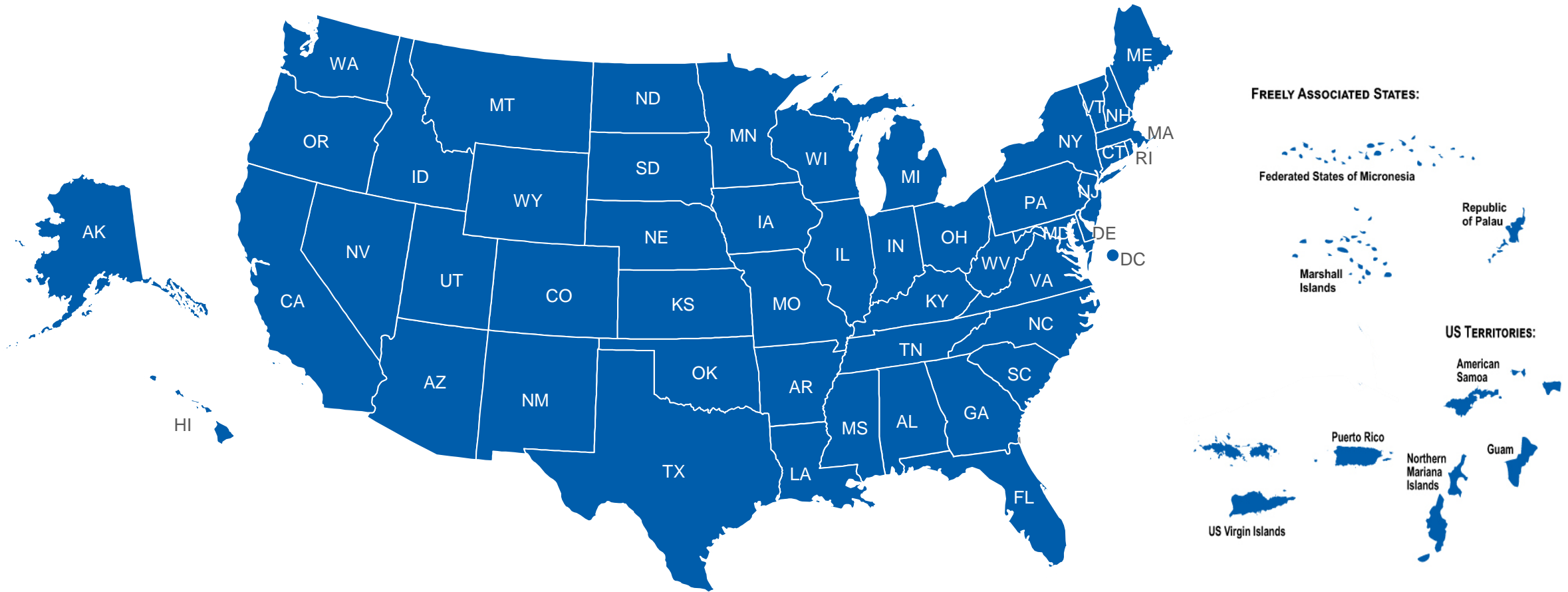
# Partnerships with Public Health Organizations

**National Partnership  
Coordination**  
39 recipients of a  
five-year funding opportunity

**Cooperative Agreement Management**



# Shared Stewardship



CDC is making changes to **better serve** and strengthen the nation's public health system through **shared stewardship** with partners and health departments.

# Collaborating Together and with CDC

Hispanic representation should be at every level of decision-making.

## CDC Partnership with the Puerto Rican Organization for Community Education and Economic Development (PROCEED):

### Key Lessons:

- Collaboration among leading Latinx organizations leads to greater impact for Latinx communities
- Coalition building requires shared leadership and guidance to be effective; support for a “backbone” organization is critical to maintain momentum toward achieving common goals
- Bilingual, bicultural information and health literacy needs to be centered in health messaging
- Collaborations should be intentional with the goal of long-term work- building trust
- Investment in the capacity of Latinx community-based organizations leads to great returns for community and public health



# Collaboration is Key

We rely on all of you, your organizations, and your members to bring the **expertise**, **strengths**, and **abilities** to help our collective public health network to meet challenges.

## Accomplishments Supporting the Hispanic/Latino Community:

### "Interactive Summary Health Statistics for Adults, by Detailed Race and Ethnicity" Tool:

- Launched in 2023
- Estimates can be generated for an additional six Hispanic sub-groups: Central American, Cuban, Dominican, Puerto Rican, South American, and Other Hispanic, Latino, or Spanish adults

### CDC's Project Firstline:

- Launched Spanish website with 72+ resources in fiscal year 2023
- In over 8 months, the site received 11,000+ views, 4,000+ link clicks, and was featured in major Spanish news syndications
- Works with NHMA to provide resources for Hispanic physicians
- NHMA works with Salud America! to highlight stories of frontline healthcare workers

### NOFO PS23-006:

- Announced in 2023
- An opportunity to identify drivers of medical mistrust in Hispanic/Latino populations in the U.S., with special attention to gay, bisexual and other men who have sex with men, and (2) address this social determinant of health by implementing and evaluating multilevel interventions in selected sites

3

# Public Health Workforce

# CDC's Commitment to Workforce Development

## Decades of Underinvestment

*Over the past decade, the public health workforce has shrunk by approximately 56,000 positions primarily due to funding issues.*

–Trust for America's Health (2020)

*The U.S. needs to hire a minimum of **80,000** more full-time equivalents (FTEs) in state and local governmental public health departments—**an increase of 80 percent**—to provide adequate infrastructure and minimum public health services to the nation.*

–Staffing Up: Determining Public Health Workforce Levels Needed to Serve the Nation (2021)



# Strengthening U.S. Public Health Infrastructure, Workforce, and Data Systems Grant

107 jurisdictions received funding

50

States

22

Cities  
(incl. DC)

27

Counties

5

Territories

3

Freely  
Associated  
States

## Workforce



Recruit, retain, support, and train the public health workforce

*\$3 Billion*

## Foundational Capabilities



Strengthen systems, processes, and policies

*\$140 Million*

## Data Modernization



Deploy scalable, flexible, and sustainable technologies

*\$545 Million  
to 64 of 107 recipients*

## Budget period start:

December 1, 2022

## Period of performance:

5 years/60 months

## 3 Partners funded with Component B:

Training, evaluation, and coordination support for grantees \$65 Million and an additional \$90 Million to support Data Modernization

## Partners Funded:



# Workforce Development

The Public Health Infrastructure Center's Division of Workforce Development provides leadership for **recruiting, training, developing, and retaining** the nation's public health workforce.

## Prospective public health professionals:

Establish and advance fellowship, internship, and training opportunities that are both multidisciplinary and interdisciplinary.

## Current public health professionals:

Offer and promote quality training opportunities from CDC, other federal agencies, and federally funded partners.

## Health departments and public health partners:

Provide capacity building/technical assistance, support/lead efforts to build the evidence-base for public health workforce planning/development, collaborate with partners.

## CDC programs:

Ensure efforts are coordinated and strategic agency-wide.

# CDC Supports Paths to Public Health Careers through Fellowships and Training Programs

## Fellowships and Training Opportunities

[Print](#)



Subscribe to the Fellowship Programs newsletter and envision your next big move as a fellow or intern at CDC!

Whether you are on a career track or deciding on which career you would like to pursue, CDC has many diverse fellowship, internship, training, and volunteer opportunities for students and professionals. Many of these opportunities provide invaluable experience and potentially offer clear cut paths to exciting careers with CDC.

### September: Open Applications

[Presidential Management Fellowship \(PMF\)](#) is open now through 09/25/2023.

[Dental Public Health Residency Program](#) is open now through 9/30/2023.

[Public Health Informatics Fellowship Program \(PHIFP\)](#) is open now through 12/01/2023.

[CDC Steven M. Teutsch Prevention Effectiveness \(PE\) Fellowship](#) is open now through 01/05/2024.

[CDC.gov/fellowships](https://www.cdc.gov/fellowships)

- 60+ fellowship programs across CDC
- Centralized resource

### Short-Term Internships

[Middle and High School Students](#)

[Undergraduate Students](#)

[Master's Degree Students](#)

### Full-Time Fellowships (1-2 Years)

[Bachelor's Degree](#)

[Master's Degree](#)

### Work Experience Opportunities

[Middle/High School Teachers](#)

[Public Health Professionals](#)

### Training & Education

We offer a variety of training and continuing education opportunities

# Hispanic National Internship

## CDC and Hispanic-Serving Institutions

[Print](#)



A group of CDC HSI alumni gathered recently at Roybal campus. Photo credit: Brandon Clifton

4

# Folic Acid Can Help Prevent Neural Tube Defects in Hispanic Communities

# What are Neural Tube Defects (NTDs)?



Open spina bifida



Anencephaly

NTDs are serious birth defects that affect the brain and spine.



The neural tube closes before many women realize they are pregnant.



Taking folic acid before and during pregnancy is crucial to help prevent NTDs.

# Hispanic/Latina Women in the U.S. Have the Highest Risk of Having a Baby Affected by an NTD



**Seven in 10,000 Hispanic births** have a neural tube deficiency



Hispanic women **have lower folate levels** than non-Hispanic White women and are **less likely to take folic acid supplements.**



Compared to non-Hispanic White women, Hispanic women are **less likely to know about folic acid and eat fortified foods.**



Fortification of corn masa flour could increase folic acid intake and **reduce the number of neural tube defects among Hispanic/Latina Women.**

# Harnessing the Power of Folic Acid: Key Sources of Folate/Folic Acid



Diet



Vitamins



Fortified Foods

Folic acid is the **only** type of folate that has been shown to prevent NTDs.



# Together, We Can Empower the Communities We Serve



**Inform patients** on the importance of folic acid



**Initiate discussions** with patients to encourage folic acid supplement intake and raise awareness



**Educate patients** on the benefits of fortified foods and how to identify them to ensure adequate folic acid intake

Tools you can use:



[www.cdc.gov/ncbddd/folicacid](http://www.cdc.gov/ncbddd/folicacid)



[www.cdc.gov/ncbddd/folicacid/hispanic-heritage-month.html](http://www.cdc.gov/ncbddd/folicacid/hispanic-heritage-month.html)



---

# CDC's PUBLIC HEALTH INFRASTRUCTURE CENTER

José T. Montero, MD, MHCDS  
znn3@cdc.gov

For more information, contact CDC

1-800-CDC-INFO (232-4636)

TTY: 1-888-232-6348. | [www.cdc.gov](http://www.cdc.gov)



The findings and conclusions in this report are those of the authors and do not necessarily represent the official position of the Centers for Disease Control and Prevention.